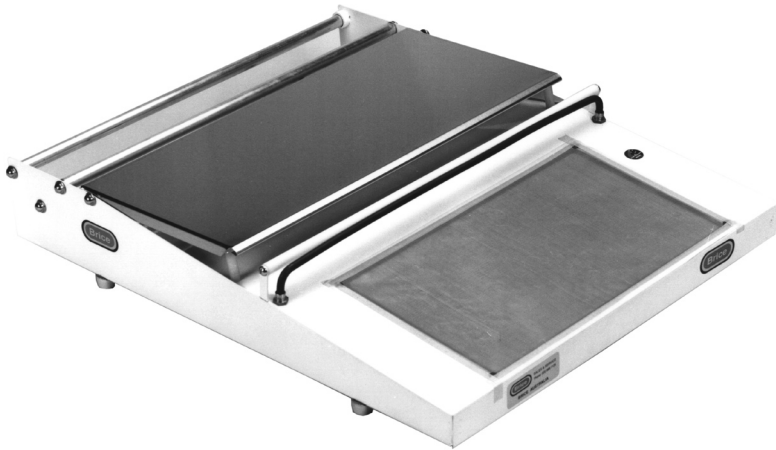


Superwrapper



The new slim line Superwrapper is for use in Bakeries, Greengrocers, Butchers, Hospitals and all other food packaging areas.

The Superwrapper is a versatile and reliable method of displaying your goods to their best advantage. It is simple to use, requires very little maintenance and is always ready when you need it.

- Plugs direct into any 240v Power outlet.
- Separate switches for hot plate and cutting.
- Internally fused for full protection.
- 3 months Guarantee, full back up service, with all parts readily available.
- Easy to use.
- Minimises packaging time.
- Maximises output.
- Dimensions 660 x 520 x 120 (highest point)

Model 8 Manual Can Opener



This well-constructed can opener features a rotary blade that automatically pierces the can every time you use it. The #8 will open most can shapes and sizes to one gallon.

- Rotary blade automatically punctures can;
- Rugged, dependable construction;
- Convenient table style;
- Bright plated finish;
- Easy to operate;
- All parts replaceable; cutting wheel and gear easily changed;
- Opens most shapes/sizes to one gallon

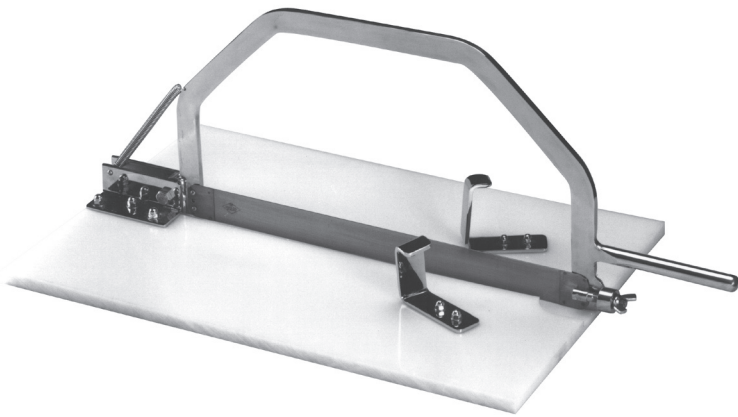
Model 266 Heavy Duty Can Opener



Model 266 Heavy Duty Electric Can Openers are table models that will open all can sizes and most shapes. Spring loaded to smooth out dented cans. Replaceable knife and gear. No lifting of heavy cans - #10 cans slide into position for opening.



Pumpkin Cutter



The Brice Pumpkin Cutter has been designed for ease of use, cleaning and above all safety and neat portioning.

The base is manufactured from high density Polyurethane and a bow which tensions the 44cm cutting blade.

The cutting blade is replaceable and the entire bow is easily removed for cleaning.

Optional galvanised table base available.

Model IV Hygienic Cheese Cutter



The Brice IV "Hygienic" cutter has been designed for ease of use, cleaning and above all safety and neat cheese portioning.

The base is manufactured from High Density Polyurethane and a bow which tensions the 44cm cutting wire.

The cutting wire is replaceable and entire bow is easily removed for cleaning.

SALES AND SERVICE

SYDNEY: Ph: (02) 9838 0505; Fx: (02) 9838 0822
MELBOURNE: Ph: (03) 9888 7125; Fx: (03) 9888 7909
BRISBANE: Ph: (07) 3205 1077; Fx: (07) 3205 1144
ADELAIDE: Ph: (08) 8234 6277; Fx: (08) 8234 9033
PERTH: Ph: (08) 9204 3222; Fx: (08) 9204 3388
HOBART: Ph: (03) 6234 8300; Fx: (03) 6231 1291
DARWIN: Ph: (08) 8984 4125; Fx: (08) 8947 1900
WAGGA: Ph: (02) 6922 5836; Fx: (02) 6926 5657
FREECALL: **1800 353 844**
EMAIL: info@briceaust.com.au



© Brice Australia Pty. Ltd.
A.B.N. 71 413 589 669
100% Australian owned and operated

Copyright © 2005 Brice Australia Pty. Ltd.
www.briceaust.com.au

Note: Specifications subject to change without prior notice